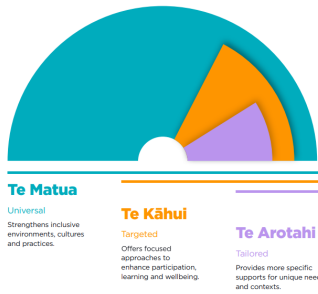


Te Tūāpapa o He Pikorua - flexible tailored model of support



Te Matua - Universal Supports

Strengthens inclusive environments, cultures and practices

Individual School

RTL B support the school to effect positive systems change through providing professional development for kaiako/kaiāwhina to strengthen universal supports for all ākonga in an environment. These could be a short series of staff meetings, or a longer inquiry-based piece of work. Support could involve using a longer-term framework such as PB4L School Wide to support system-wide change.

- PB4L Schoolwide
- Universal Design for learning professional development
- Teaching for Positive Behaviour professional development
- Syndicate/ year level supports
- Pastoral care systems supports

Project

prescribed piece of RTL B work that fits within the RTL B service expectations from MOE Funding Agreement. No consent is required - consent has been obtained elsewhere if needed.

- Bilingual Assessment
- Cluster -wide Initiative (SENCO meetings)
- Gateway
- IYT
- Team initiative
- Transitions to school

Group of Schools

RTL B can support a group of schools/Kahui Ako to effect positive systems change through providing professional development in a staff meeting or whole day workshop. Support could involve using a longer-term framework to support system-wide change within the group of schools.

- Kahui Ako connects – Teacher aide support
- Focus request across schools eg transition of contributing schools
- Focus request such as behaviour, UDL, dyslexia

Kaiako

A kaiako R4S is for a kaiako or group of kaiako who would like to explore ways to strengthen and grow their universal inclusive practices to meet the diverse range of needs within their learning environment. A kaiako R4S offers thorough and robust professional dialogue with one, or at times, two RTL B who are able to support the kaiako to develop a plan to meet the range of needs in their class. A kaiako R4S is a proactive, productive and positive professional learning support.



Te Kāhui - Targeted Supports

Offers focused approaches to enhance participation, learning and wellbeing

Group of students

The needs of a group of students has been identified by the school as a trend or shared need.



RTLB will support the teacher/s develop skills and knowledge in order to implement a **programme or targeted intervention**. No student will be identified by name and individual student data will not be collected.

Programme / intervention eg.

- Paired Reading or Paired Writing
- Circle Time
- Cooperative learning strategies
- Support with social skills interventions
- Targeted behaviour support ideas
- Strengthening transition processes

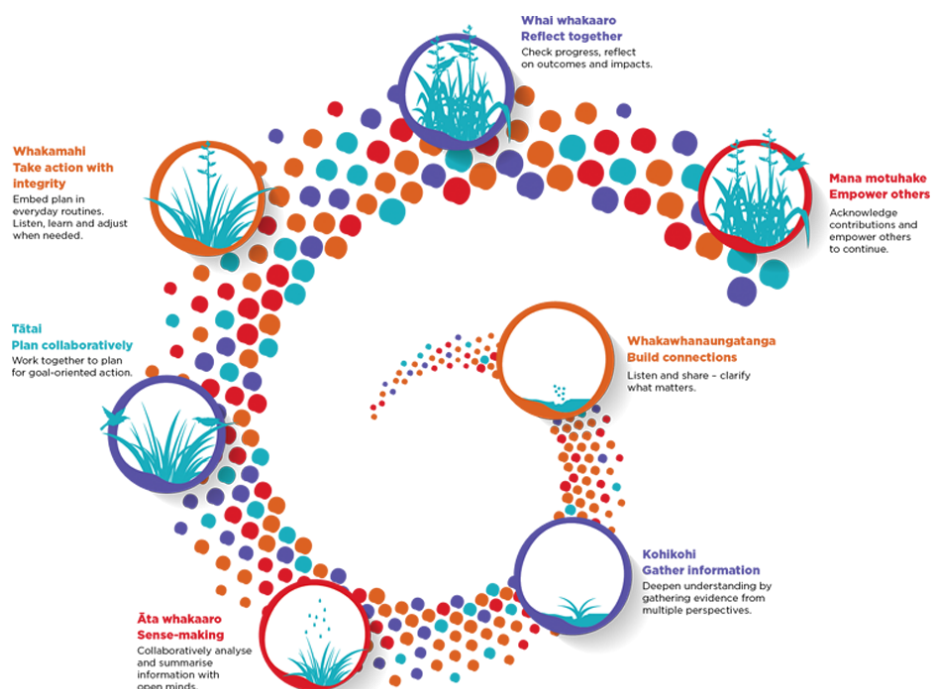
Te Arotahi - Tailored Supports

Provides more specific for unique needs and contexts



Individual Student Requests for Support

Sometimes, ākonga need individualised and tailored support plans and interventions to help them to thrive at school. With informed consent from the whānau, and working with a collaborative team, RTLB will follow the He Pikorua in Action inquiry process to build teacher capability and confidence to meet the needs of individual ākonga.



Whether the support requested falls within Te Mātua, Te Kāhui or Te Arotahi, He Pikorua in Action will be followed.